

PALM BEACH PARK OF COMMERCE, P.I.P.D., PLAT NO. 1

175

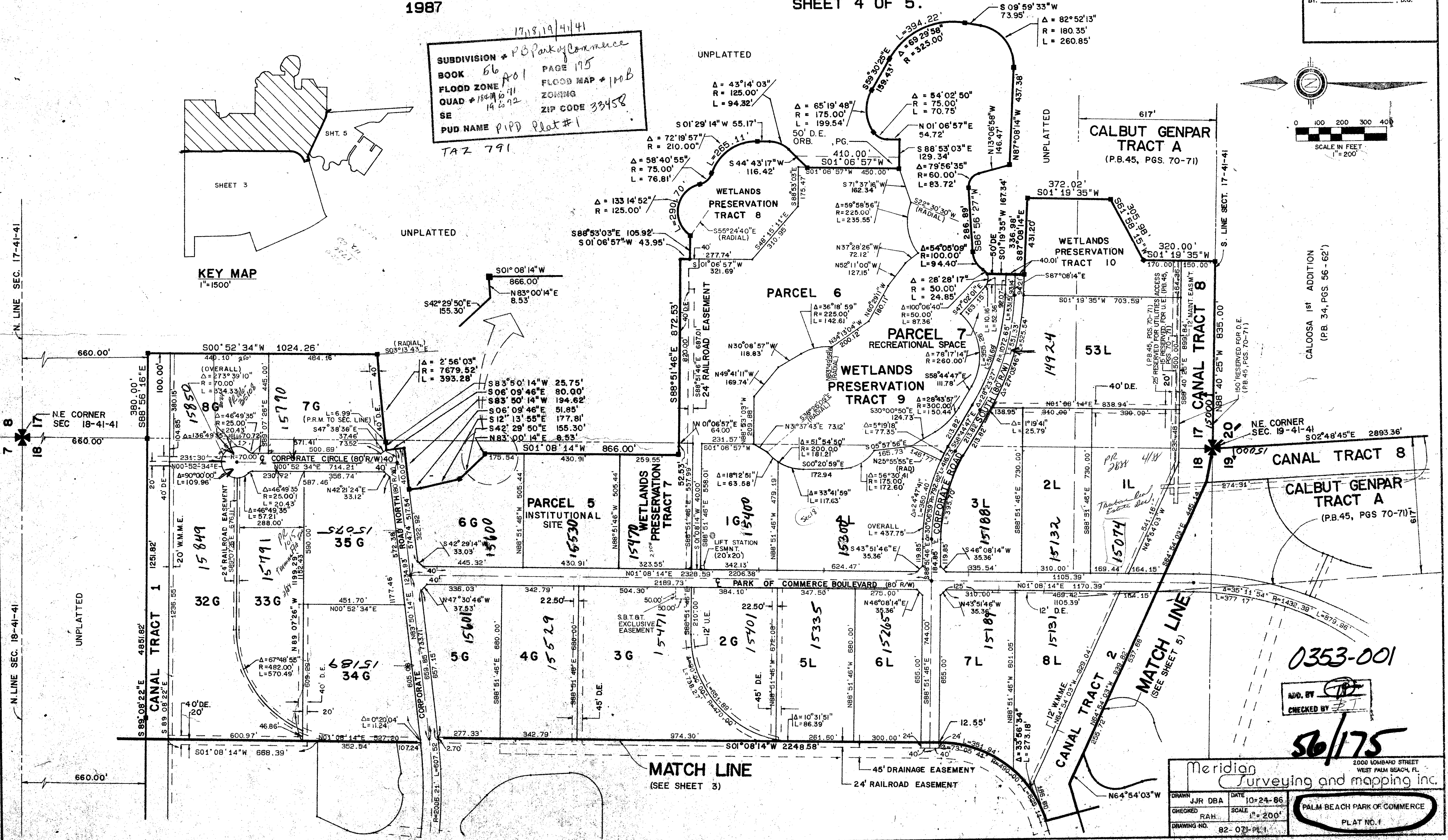
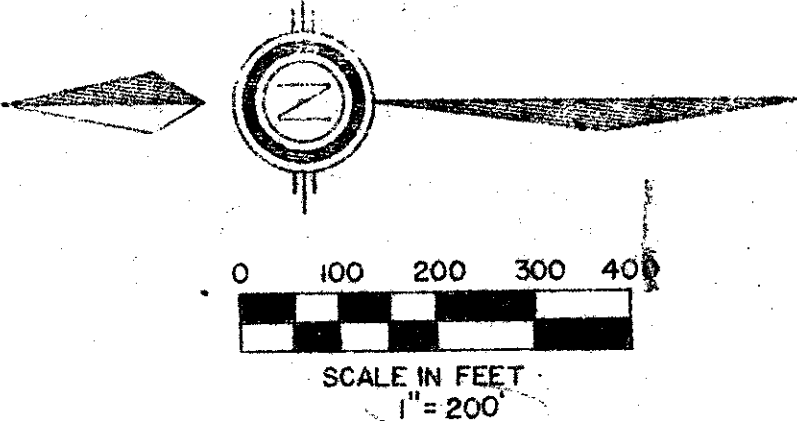
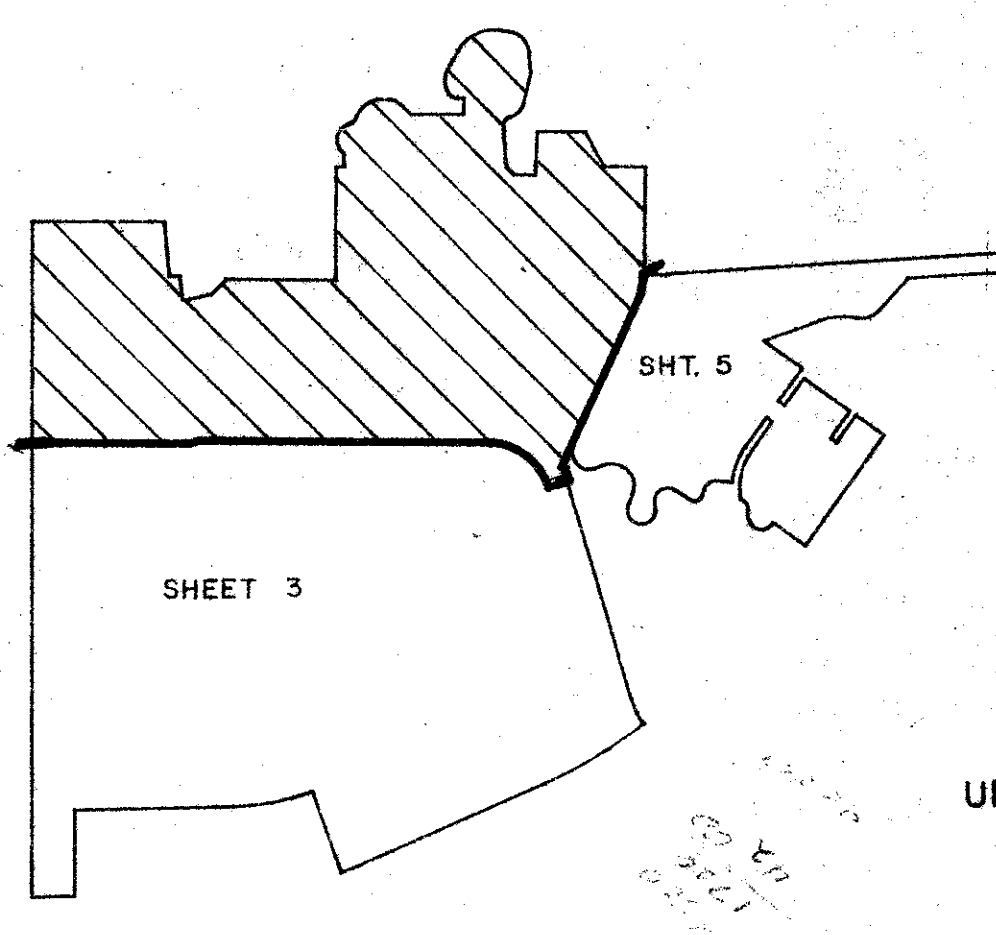
A PORTION OF PALM BEACH PARK OF COMMERCE, A P.I.P.D.
 SITUATE IN SECTIONS 17, 18, & 19, TWP 41S, RGE 41E, PALM BEACH CO., FLORIDA
 BEING A PARTIAL REPLAT OF A PORTION OF "CALBUT GENPAR TRACT A"
 P. B. 45, PGS. 70 & 71, OF THE PUBLIC RECORDS OF PALM BEACH COUNTY, FLORIDA

1987

SHEET 4 OF 5.

STATE OF FLORIDA
 COUNTY OF PALM BEACH
 THIS PLAT WAS FILED FOR
 RECORD _____
 THIS _____ DAY OF _____
 AD, 1987 AND DULY RECORDED
 IN PLAT BOOK _____ ON PAGES
 _____ AND _____
 JOHN B. DUNKLE, CLERK
 BY: _____, D.C.

17, 18, 19, 41, 41
SUBDIVISION * PB Park of Commerce
BOOK 56 **PAGE** 175
FLOOD ZONE A01 **FLOOD MAP** # 100B
QUAD # 18-41-41 **ZONING**
SE 14 1/2 12 **ZIP CODE** 33458
PUD NAME PIPD Plat # 1
 TAZ 791



CALOOSA 1st ADDITION
 (P.B. 34, PGS 56 - 62')

CALBUT GENPAR TRACT A
 (P.B. 45, PGS 70-71)

0353-001

CHECKED BY

56/175

Meridian
 Surveying and mapping inc.
 2000 LOMBARD STREET
 WEST PALM BEACH, FL.

DRAWN: JJR DBA DATE: 10-24-86
 CHECKED: RAH SCALE: 1"=200'
 DRAWING NO.: 82-071-PL-1

PALM BEACH PARK OF COMMERCE
 PLAT NO. 1